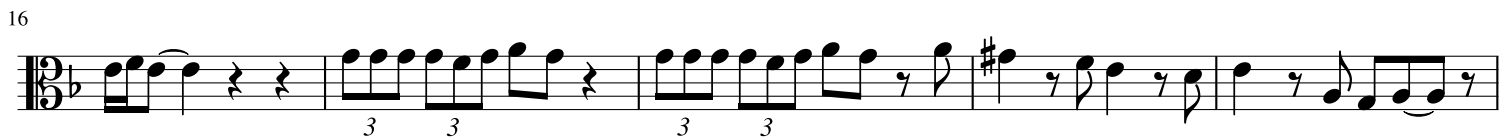


# House of Cards

BTS

Arr. by sharleeism



48

Musical staff 48, bass clef, key signature of one sharp (F#). The staff contains a sequence of eighth and sixteenth notes, including two triplet markings (indicated by a '3' below the notes).

53

Musical staff 53, bass clef, key signature of one sharp (F#). The staff contains a sequence of eighth and sixteenth notes with slurs and accents.

58

Musical staff 58, bass clef, key signature of one sharp (F#). The staff contains a sequence of eighth and sixteenth notes, including four triplet markings (indicated by a '3' below the notes).

64

Musical staff 64, bass clef, key signature of one sharp (F#). The staff contains a sequence of eighth and sixteenth notes, including a triplet marking (indicated by a '3' below the notes) and a slur over a group of notes.

70

Musical staff 70, bass clef, key signature of one sharp (F#). The staff contains a sequence of eighth and sixteenth notes with slurs and accents.

76

Musical staff 76, bass clef, key signature of one sharp (F#). The staff contains a sequence of eighth and sixteenth notes with slurs and accents.

81

Musical staff 81, bass clef, key signature of one sharp (F#). The staff contains a sequence of eighth and sixteenth notes with slurs and accents, ending with a double bar line.